

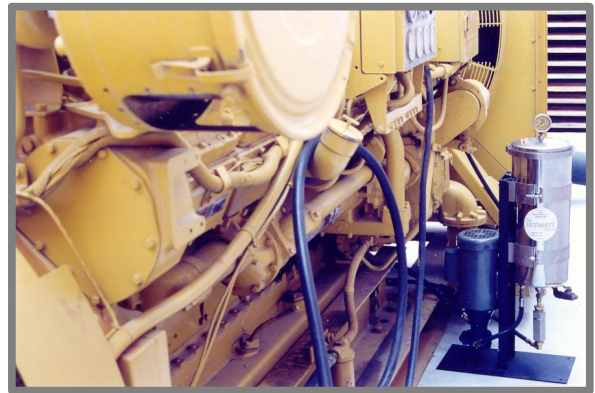


**PERFECT  
FILTRATION**  
S Y S T E M S

**MODEL 8000L**

## **ULTIMATE PRELUBE ENGINE OIL SYSTEM**

### **ELIMINATES DRY STARTS AND ENGINE WEAR**



### **ULTIMATE MODEL 8000L**

**Single housing filtration system with pump, motor, gauge, mounting stand, and special valving.**

US Patent #5271850

#### **How does the pre-lube oil system work?**

The system is designed to draw the engine oil out of the sump and filter the oil through a 3-micron absolute depth-type filter element and then return the filtered oil back into a pressure plug on the engine block pressurizing and lubricating the engine. This will keep the oil ultra clean and lubricate the internal working parts of the engine. Upon engine start-up the pre-lube system will stop lubricating the engine but continue oil filtration. The filter removes 99.9% of the water and the majority of the solids.

#### **Will this system reduce engine wear and extend oil life?**

Yes, The system virtually eliminates engine wear because the engine will never have a dry start and the oil remains very clean. FACT: the majority of the engine wear is caused by dry starts and dirty oil. You can expect the oil to last several years without replacement because the depth-type filter is removing the water and the majority of the solid particles on a continuous basis.

#### **What can I expect from the system?**

You can expect: ultra clean water free oil, longer oil life, longer OEM filter life, longer engine life, no more dry starts, less engine wear, less downtime, fewer disposal fees, lower maintenance costs, and a quick return on your investment.



3-micron absolute depth-type filter that holds 8-10 pounds of solids and up to 1 gallon of water. These filters are built to last and clean the oil efficiently.



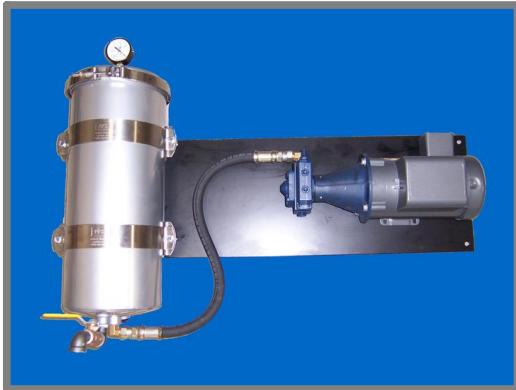
**PERFECT  
FILTRATION**  
S Y S T E M S

# MODEL 8000L

## Product Features and Benefits

- » Removes 99.9% of the water
- » Removes the majority of the solids
- » Virtually eliminates engine wear
- » No more dry starts
- » 3-micron absolute filter
- » Filter holds 8 to 10 pounds of solids
- » Filter will absorb up to 1 gallon of water
- » Long depth-type filter life
- » Gear pump w/ internal relief valve
- » Electric motor
- » Quiet running motor
- » Powder coated mounting stand
- » Ball valve drain
- » Gauge to help monitor filter life
- » High quality low maintenance product
- » Ultra clean oil
- » Easy to service filter, pump, and motor
- » Greatly extends oil life
- » Less downtime and more production
- » Easy installation
- » No more silt, soot, and sludge
- » Fewer oil disposal fees
- » Lower maintenance costs
- » Patented proven product
- » Quick return on your investment
- » U.S. Patent #5271850
- » Recommended by some OEM'S.
- » Vital protection for machines since 1981

## 8000L- Wall Mounted



## System Specifications

Length	12"
Width	12"
Height	40"
Dry Weight	100 lbs
Inlet and Outlet Ports	3/4" NPT
Ball Valve Drain	1/2"
Gear Pump	1 or 3 GPM
Standard Motor	3/4 HP
Standard Motor Voltage	240 / 480 VAC
Motor Phase	3 phase
Make up oil required	20 quarts
Depth-type Filter Dimensions	7 1/2 x 19 3/4
Filter Absolute Micron Rating	3 micron
Engine Oil Filter #	7544
Pressure Gauge	Included
Inlet Y-Strainer	Included
Mounting Stand	Included



**PERFECT  
FILTRATION**  
S Y S T E M S

Perfect Filtration Systems, Inc.  
2711 Airport Road, Suite 6  
Plant City, FL 33563

Phone 800-864-7855  
Fax 813-659-2435  
Email: [sales@perfectfiltration.com](mailto:sales@perfectfiltration.com)

**VITAL PROTECTION FOR MACHINES SINCE 1981**

ULTIMATE PRELUBE ENGINE OIL SYSTEM